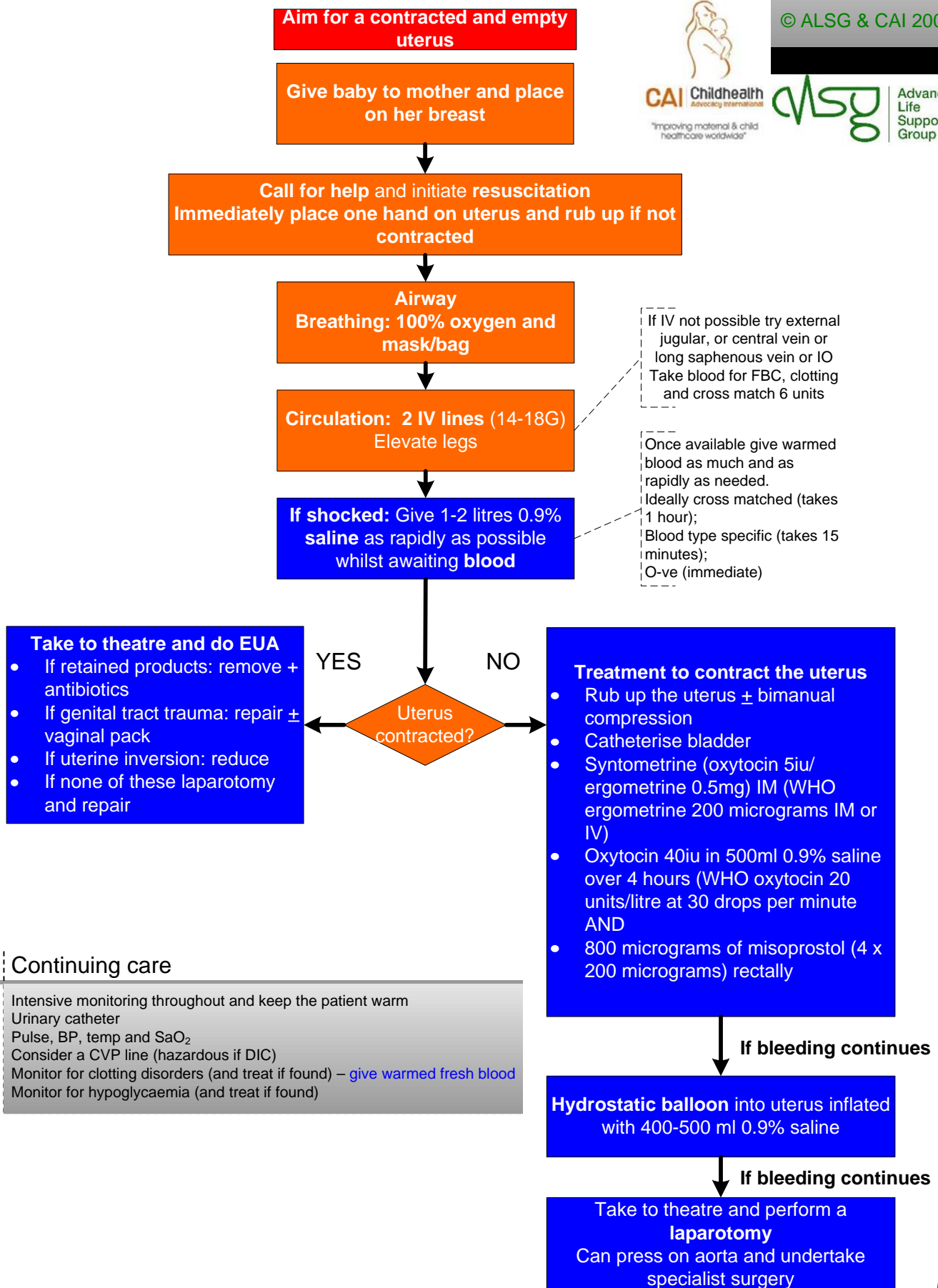


Large postpartum haemorrhage

© ALSG & CAI 2008



Continuing care

Intensive monitoring throughout and keep the patient warm
Urinary catheter
Pulse, BP, temp and SaO₂
Consider a CVP line (hazardous if DIC)
Monitor for clotting disorders (and treat if found) – give warmed fresh blood
Monitor for hypoglycaemia (and treat if found)

Check Hb or haematocrit after resuscitation and consider iron orally if anaemic